

# T<sub>2</sub>m



**Boscombe Road, Tooting SW17**

**£610,000 Freehold**

- **Ideal for Investors**
- **Naturally Bright**
- **Double Reception**
- **3 Bed House (2 Doubles & 1 Single)**
- **With Lots of potential**
- **Vacant Possession**
- **Large Rear Garden**
- **Part of ABC Estate**
- **Excellent Transport Links**
- **Close to amenities**

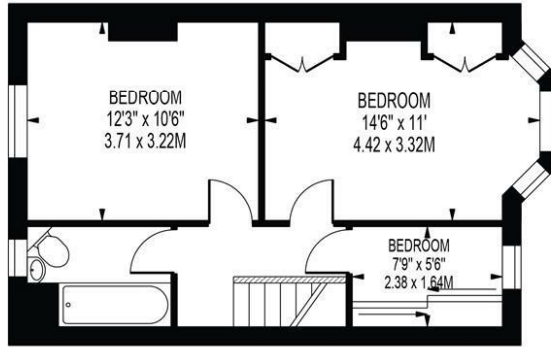
02086400146

[admin@time2move.com](mailto:admin@time2move.com)

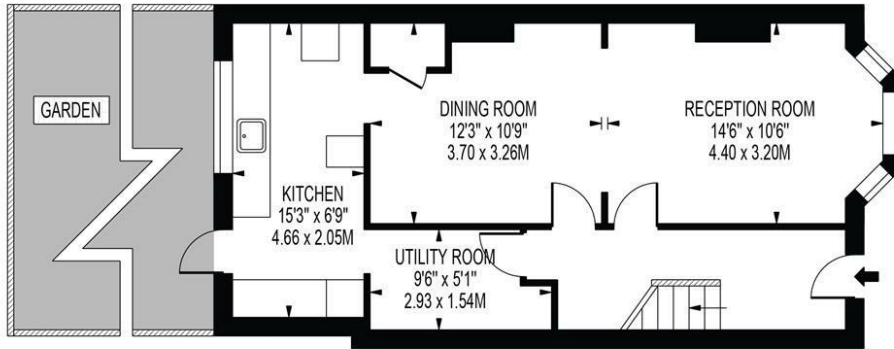


# BOSCOMBE ROAD

APPROXIMATE GROSS INTERNAL FLOOR AREA: 932 SQ FT - 86.63 SQ M



FIRST FLOOR



GROUND FLOOR

FOR ILLUSTRATION PURPOSES ONLY

THIS FLOOR PLAN SHOULD BE USED AS A GENERAL OUTLINE FOR GUIDANCE ONLY AND DOES NOT CONSTITUTE IN WHOLE OR IN PART AN OFFER OR CONTRACT. ANY INTENDING PURCHASER OR LESSEE SHOULD SATISFY THEMSELVES BY INSPECTION, SEARCHES, ENQUIRIES AND FULL SURVEY AS TO THE CORRECTNESS OF EACH STATEMENT. ANY AREAS, MEASUREMENTS OR DISTANCES QUOTED ARE APPROXIMATE AND SHOULD NOT BE USED TO VALUE A PROPERTY OR BE THE BASIS OF ANY SALE OR LET.

